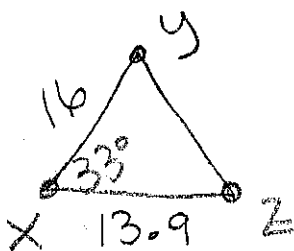


Warm-Up: Find the area of the Triangle

Find the area of triangle XYZ

if $z = 16$, $y = 13.9$ and $X = 33^\circ$



$$A = \frac{1}{2} yz \sin X$$

$$A = \frac{1}{2} (13.9)(16) \sin 33^\circ$$

$$A = 60.64^2$$