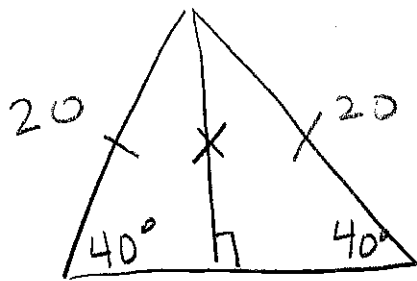


Warmup - Applications #2

Draw and label a diagram.
(Don't Solve - just draw pictures and label.)

Given an isosceles triangle with legs of length 20 cm and base angles of 40° . Find the height.



You should have drawn/labeled:

- right triangle(s) ✓
- any given length(s) ✓
- any given angle measure(s) ✓
- one variable labeling the side you are finding ✓