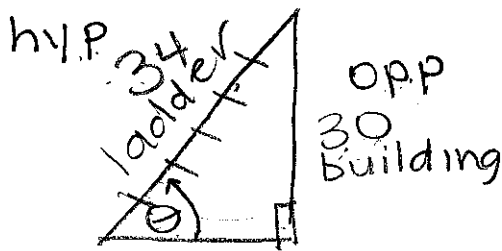


Warm-up: Applications 1

A 34-foot ladder rests against the top of a 30-foot building. Find the angle of elevation to the ladder.



$$\sin \theta = \frac{\text{opp}}{\text{hyp}}$$

$$\sin \theta = \frac{30}{34}$$

$$\theta = \sin^{-1} \left(\frac{30}{34} \right)$$

$$\theta = 61.9^\circ$$